



# USER GUIDE



# V6

## Plot Manager

*Version 6*



PAD System International Limited

www.padsystem.com



PAD System™ is a trademark and a system developed by:

PAD System International Limited  
Flat A, 2/F, Cheung Wing Industrial Building,  
109-115 Wo Yi Hop Road, Kwai Chung,  
New Territories, Hong Kong

Telephone: (852) 2370-9063  
Fax: (852) 2370-9085  
E-mail: [padinfo@padsystem.com](mailto:padinfo@padsystem.com)  
Technical support: [support@padsystem.com](mailto:support@padsystem.com)  
Web site: <http://www.padsystem.com/>

No part of this publication and PAD System™ software may be reproduced, transmitted, transcribed, stored in a retrieval system, or translated into any language in any part form by any means without the written permission of PAD System™ Technologies Inc. Any unauthorized duplication or use of PAD System™, in whole or in part, in print, or in any other storage and retrieval system is forbidden.

© 1988-2014 PAD System International Limited All rights reserved.

PAD System International Limited© 2014



## PAD System™ Plot Manager 6.0

### **Plot Manager**

PAD System™ Plot Manager product allows you to stack files to be plotted through the network. These files can be Pattern files and/or Marker files. Plot Manager product allows you to generate plot order, determine quantity and establish pauses. Most importantly, you can continue working on your applications without having to remain on standby while launched files are plotted.



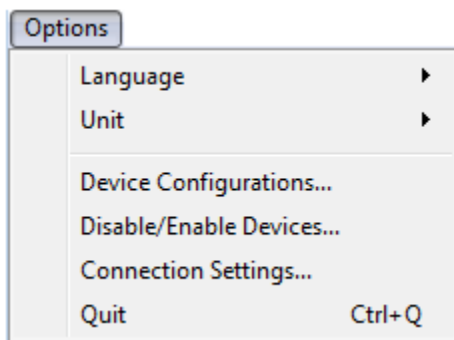
# Chapter 1

## The Menu Bar

• • • • •

### Options Menu

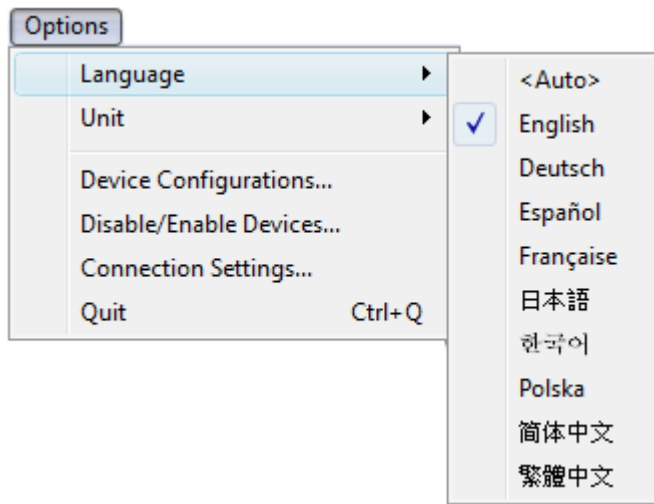
The *Options* menu allows you to customize your application.





## Options Menu: Language

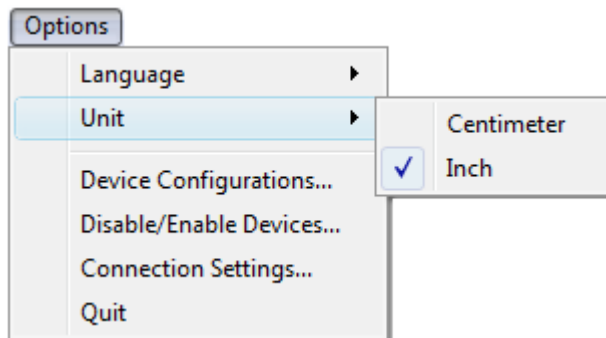
The *Language* item allows you to define the language showing on the product. To choose *Auto from the list*, the language will be showing according the language of the operating system.





## Options Menu: Unit

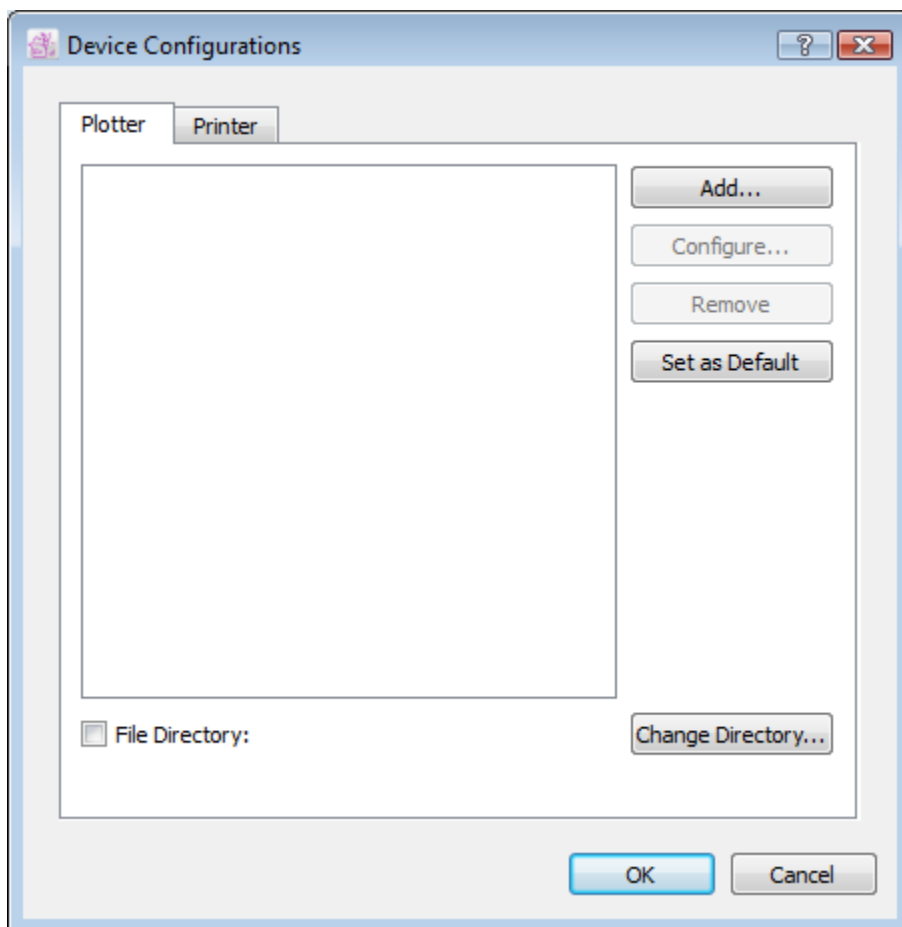
The *Unit* in the *Options* menu allows user to select the desired measurement unit (Centimeter or Inch).



## Options Menu: Device Configurations...

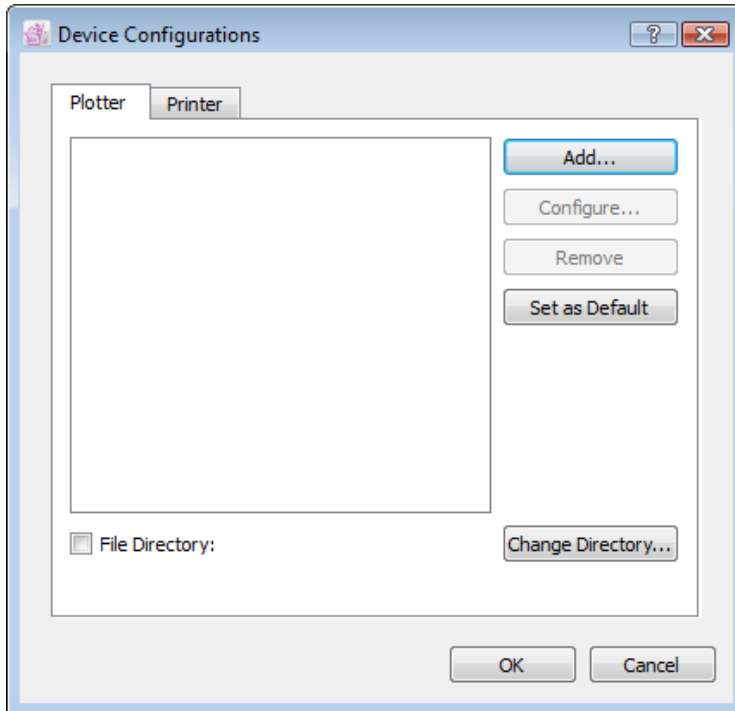
The *Device Configurations* item, in the *Options* menu, enables you to select, from a list of drivers, the driver that corresponds to your plotter. This enables your plotter to connect to PAD System™ software.

From the Device Configurations dialog box, user can add / set the built-in plotter driver from PAD System under "Plotter" item; or, set your own Windows printer driver under the "Printer" item.

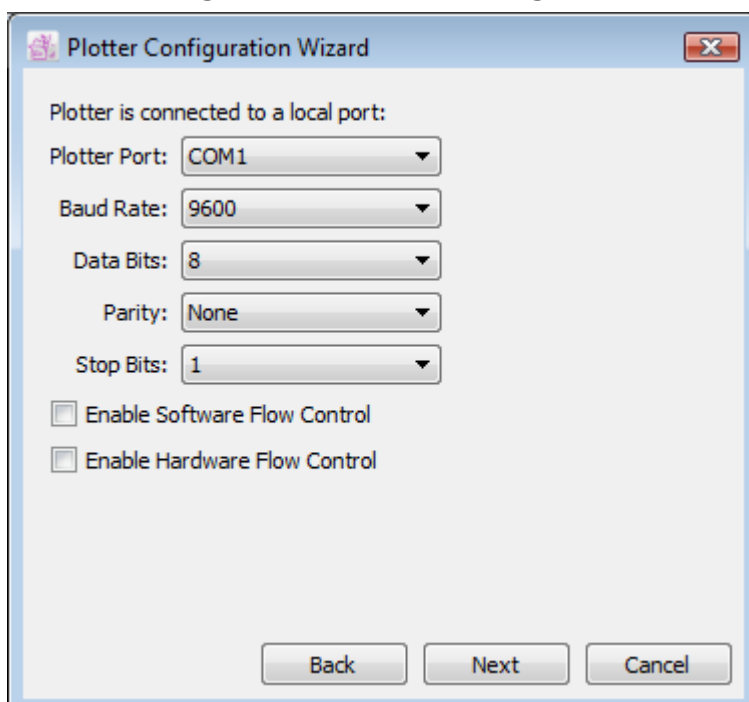


To configure plotter driver:

- 1 Select *Option* menu; choose *Device Configurations...*, a dialog box appears:



- 2 Click *Add...* to choose a plotter that is ready to connect to Plot Manager. Plotter Configuration Wizard dialog box shown as below:







To configure the port setting COM Port (Windows) / Serial Port (Macintosh) if necessary.

**Plotter Port:** Pull-down menu to select the type of port connected to the plotter.

**Baud Rate:** Pull-down menu with options - 2400, 4800, 9600, 19200 or 38400 bauds.

**Data Bits:** Pull-down menu with options - 7 / 8 data bits.

**Parity:** Pull-down menu with options - EVEN, ODD or NONE.

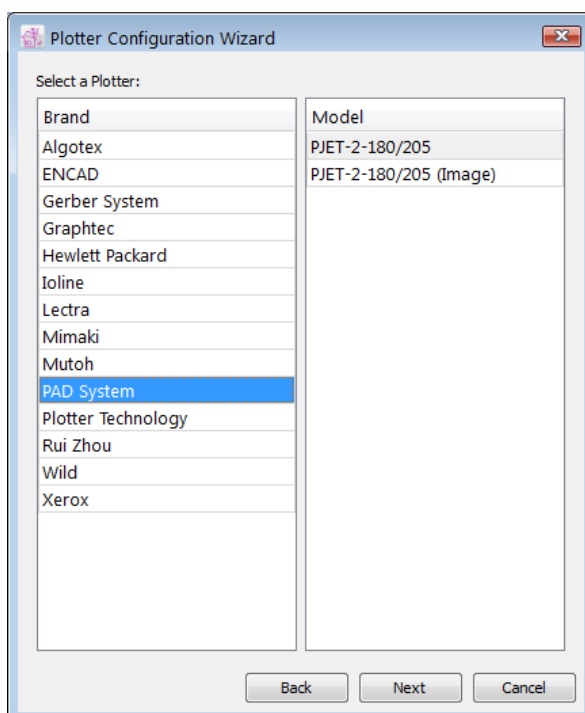
**Stop Bits:** Pull-down menu with options - 1, 1.5 or 2 data bits.

**Enable Software Flow Control:** Check / Uncheck this option

**Enable Hardware Flow Control:** Check / Uncheck this option

Click Next to continue the configuration process.

**3** Choose the *Plotter* and click *Next* button to continue.



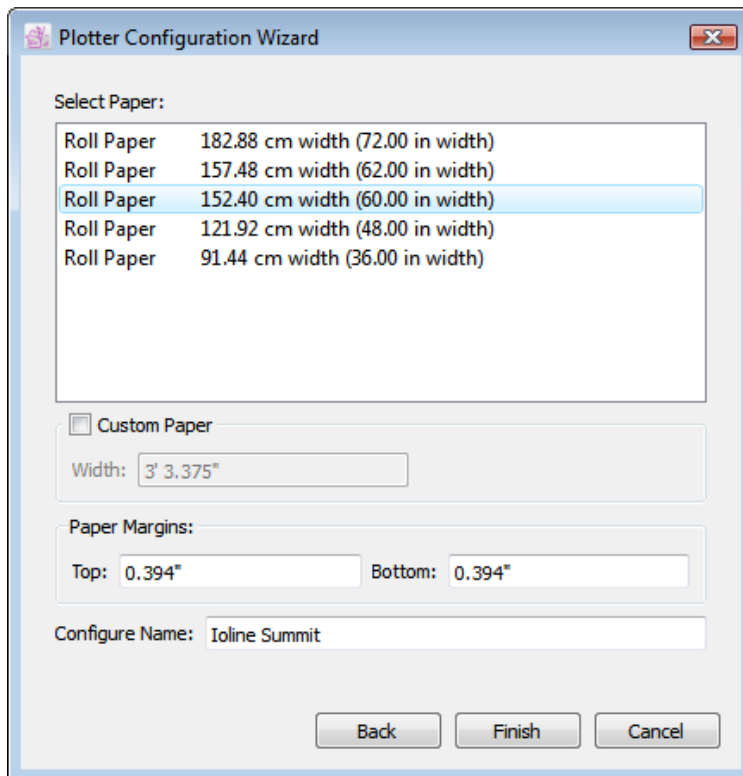


### Support Plotter Drivers

Brand	Model
Algotex	PowerJet-ProJet
ENCAD	CADJET2
Gerber System	SP 200 GGT AccuMark 100 GGT AccuMark 300 GGT AccuMark 700 GGT AccuMark Silhouette
Graphtec	CE2000 CE3000 CE5000 FC8000 GP3000
Hewlett Packard	HPGL 2 HPGL 2 Basic HPGL 2 Color
Ioline	Flexjet Signature 5000 Studio 8 Studio Cutter Stylist 2000 Summit
Lectra	E33 FlyPen Investronica Microdynamic Plot CF
Mimaki	CG-90 AP CG-90 APR
Mutoh	AC-1650 AC-1650 – Take-Up Roll
PAD System	PJET-2-180/205 PJET-2-180/205 (Image)

Plotter Technology	Neon TX
Rui Zhou	R Series
Wild	TA40 TA400 TA500
Xerox	2230ij

4 A dialog box shows a list of paper sizes.



**Select Paper:** Choose the default **Paper Width** from the list.

Example: Roll Paper 157.48 cm width (62.00 in width)

If the Actual Paper Width is 62.00, user has to add the print margins at the *Paper Margins text boxes* (since print size and actual paper size is different).

**Custom Paper:** Check to customize the paper width.

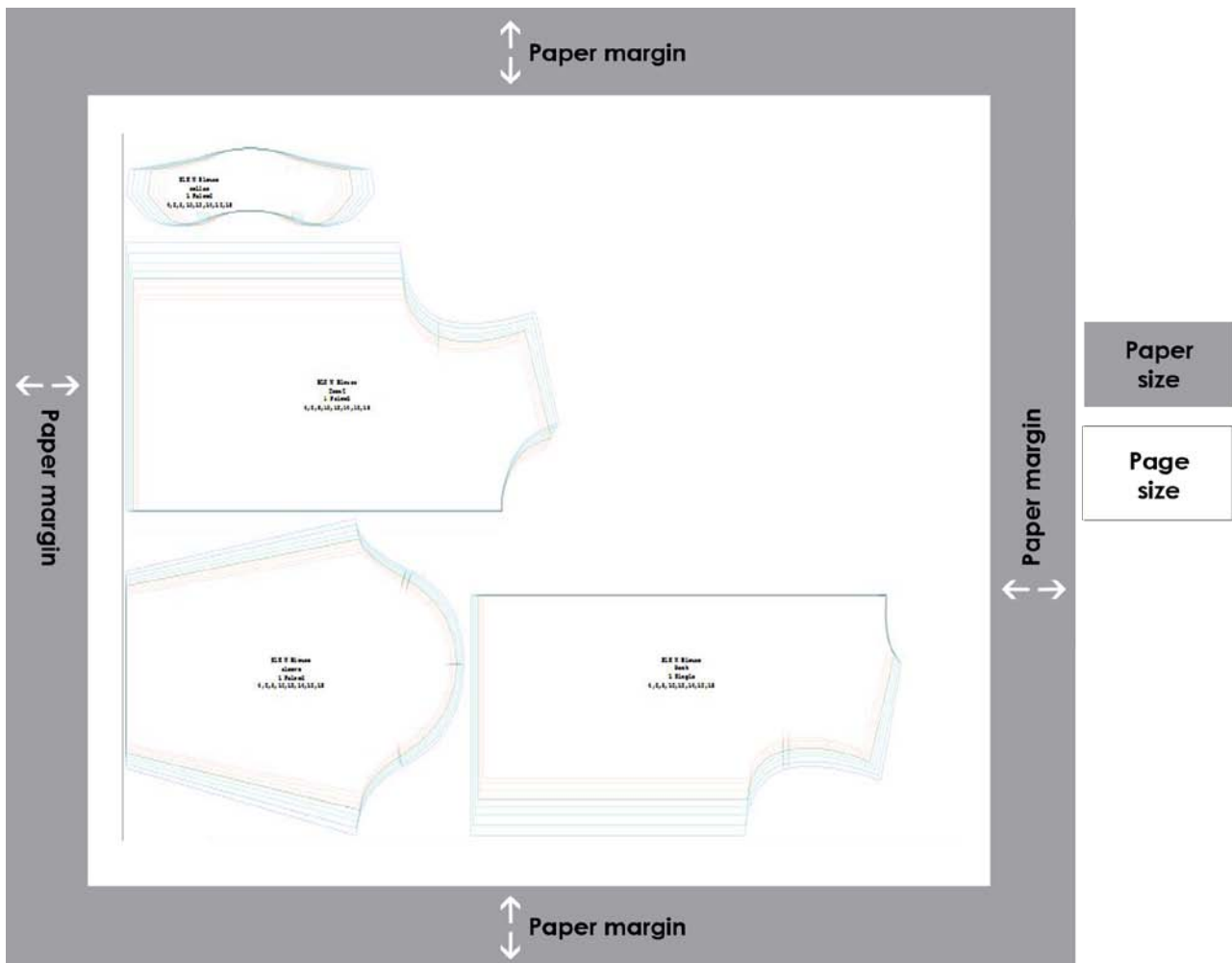
**Paper Margins:** Set the paper margins - Top and Bottom.



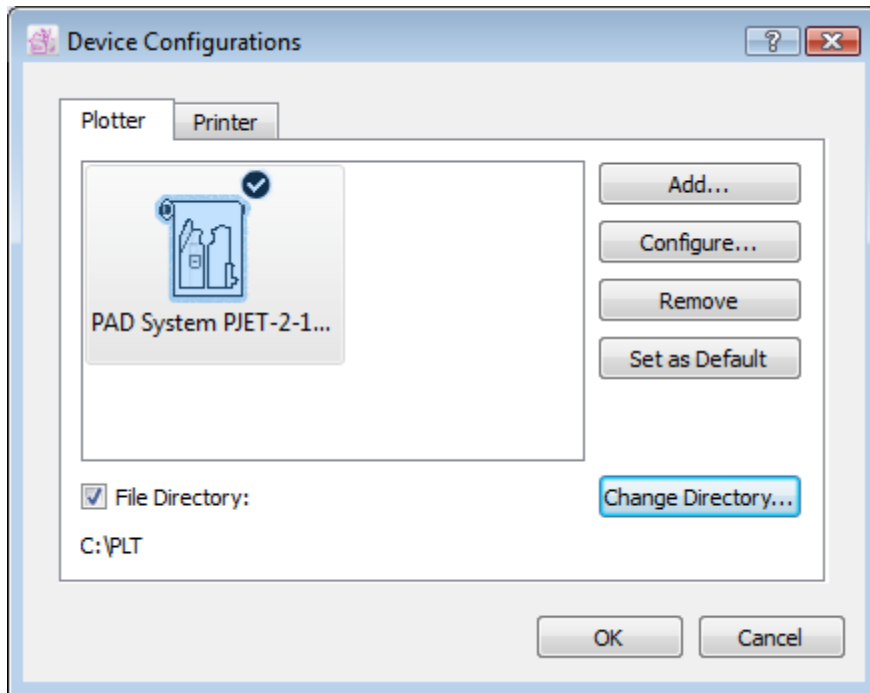
**Configure Name:** Show the selected plotter name from previous settings.

Click *Finish* to execute.

### Diagram of Paper Width



5 Default Plotter will be chosen in Device Configurations dialog box.



**Configure...:** Change the setting of the selected driver. Click *Configure...* or double click the mouse button on selected driver to change the setting to the driver of existing Plotter.

**Remove:** Click *Remove* to remove selected driver.

**Set as Default:** Choose the selected Plotter then click for setting as default.

### Plot HPGL2 files by Plot Manager

It can read plot files (HPGL2 Files) and through its sending to the plotter.

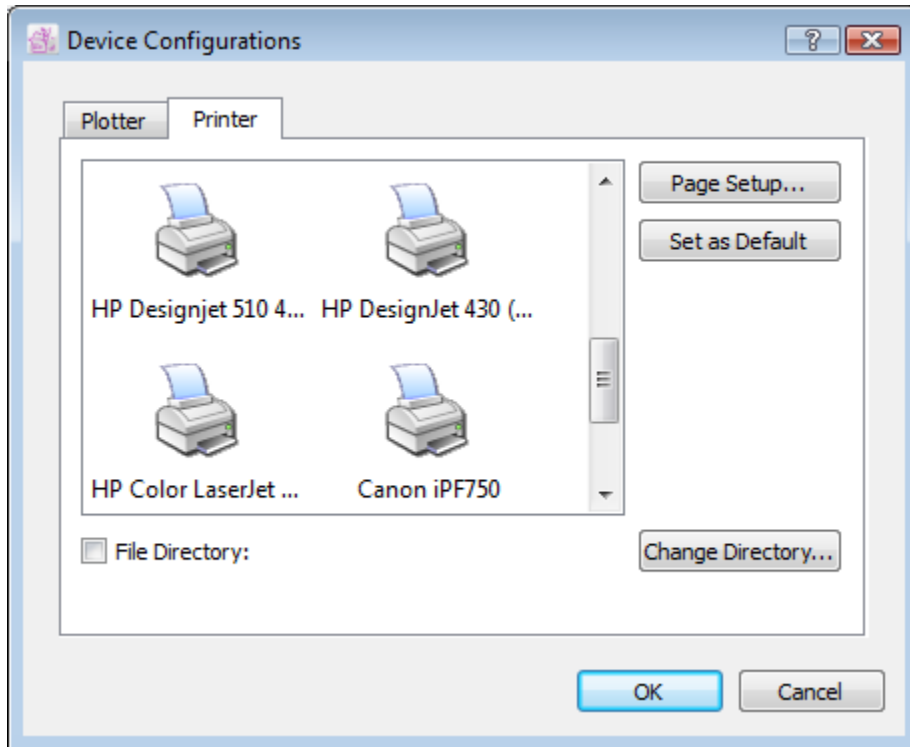
To do so:

- 1 To select Device Configurations..., and press "Add" button to add the plotter driver. Ex: PAD System PJET-2-180/205.
- 2 Check "File Directory" to start plotting. When unchecked, the plotting plot files will be struck in the directory.
- 3 Press "Change Directory..." button to modify a directory other than the current one.

**Remark:** If there have more than one driver showing in the windows and both of them are not activated. Under this circumstance to set the directory to save plot files. It will apply to the driver which is the last added.

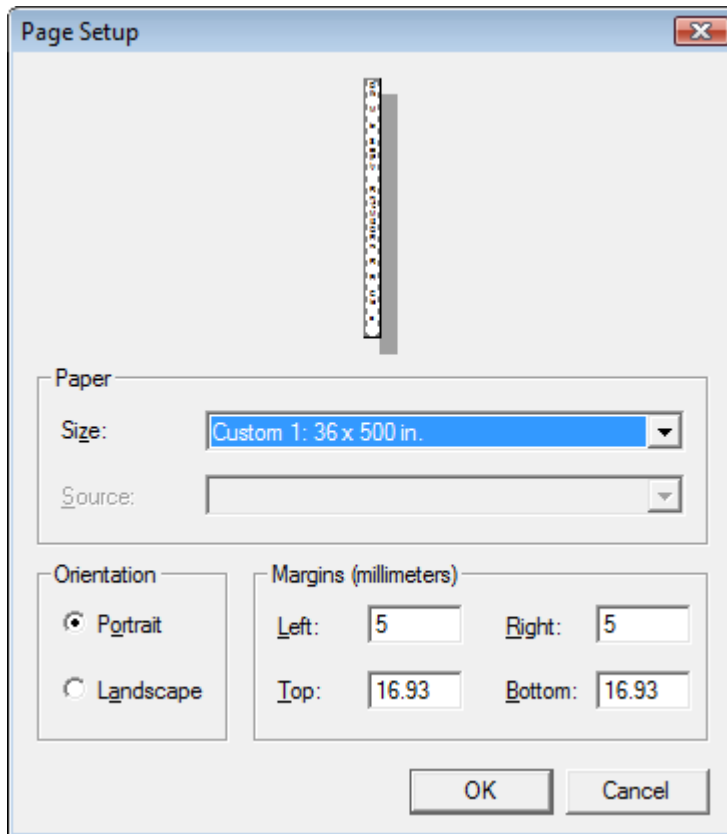
**To configure printer driver:**

You should install the driver of your selected printer. The Printer driver will be updated in the "Printer" options once the drive has been successfully installed.





**Page Setup...:** Allows choosing the paper size, set margins and/ or orientation.



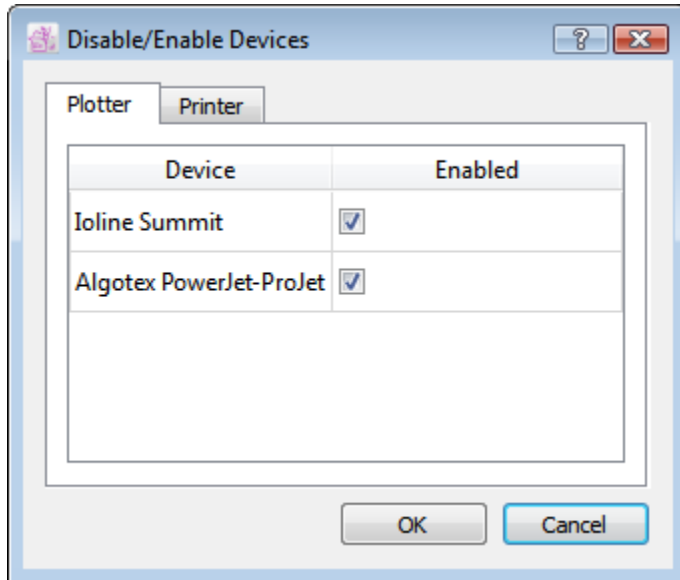
Click *OK* to apply the setting.

**Set as Default:** Choose the selected Printer, click *Set as Default* button to save as a default printer.

The printer driver will show on the Device Configurations dialog box.

## Options Menu: Disable/Enable Device...

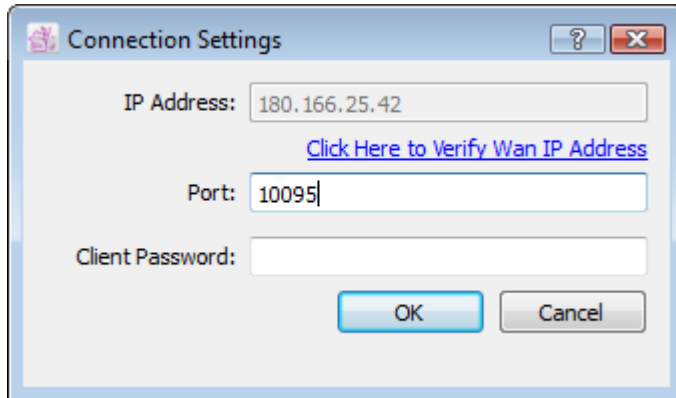
This option allows disabling the plotter and user is not able to send plot job to this plotter.





## Options Menu: Connection Settings...

*Connection Setting* allows setting the password to the client. For example; The client is from Pattern or Marker product.



**IP Address:** The current WAN IP Address connects to public Internet.

**Port:** Take the TCP/IP Port number automatically.

**Client Password:** Set a password and give it to the users who need to send plot jobs to Plot Manager.

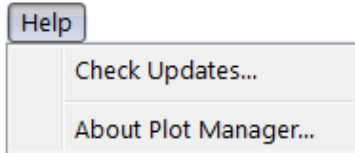
Click *OK* to execute.

## Options Menu: Quit

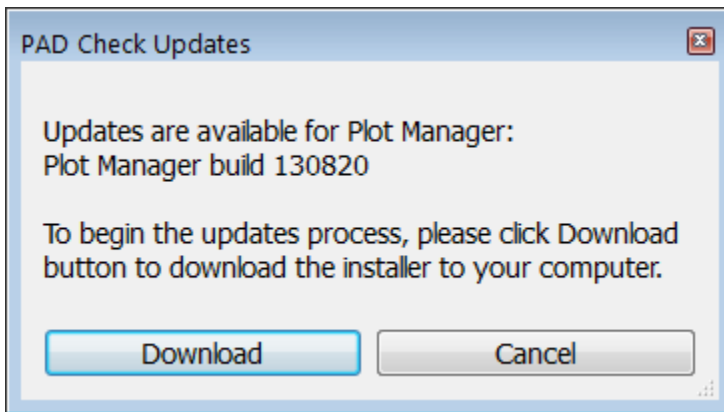
The *Quit* item in the *Options* menu allows you to close the application and any open files.



## Help Menu: About Plot Manager...



**Check Updates...** item, a dialog box appears to remind you the updates is available to download.



By clicking the *About Plot Manager...* item from the *Help* menu, you can view:

- The name and version of the application installed.

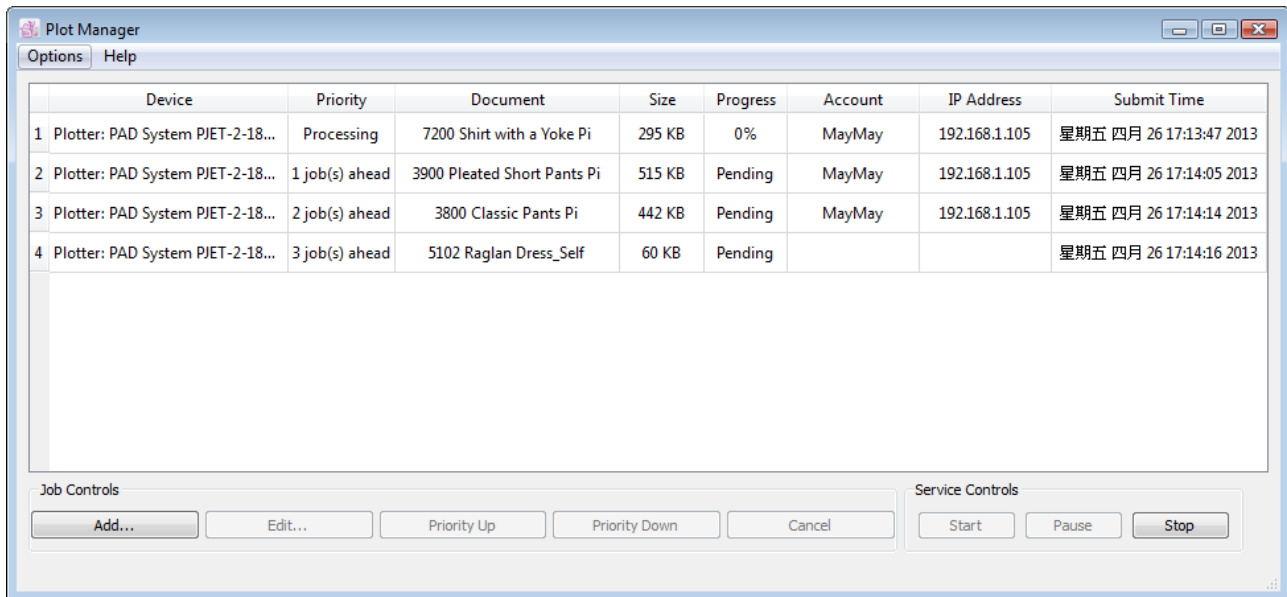


## Chapter 2

# Plot Manager Windows



The PAD System Plot Manager window is divided into three sections:



- The top section displays information about the file being plotted.
- The middle section displays all the files to be plotted.
- The bottom section displays command buttons that enable you to organize the listed files to be plotted.

### Job Controls

**Add:** The *Add...* item opens any PAD System pattern and/or marker of the same version or lower. The chosen file is read and the proper dialog box appears, allowing you to establish the information to be plotted.

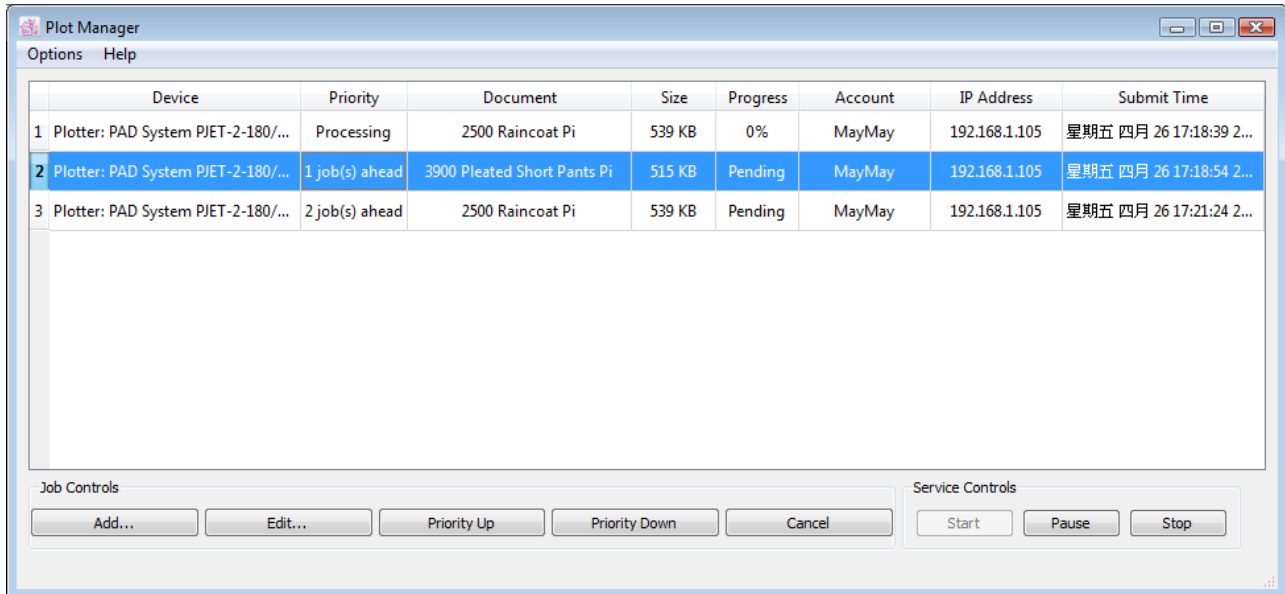
**Edit:** The *Edit...* item modifies the information to be plotted. The chosen file displays the proper dialog box (marker or pattern) to establish the new information to be plotted. In the queue, select a file to modify and click the *Edit...* button; a dialog box appears to change the information.

A double-click on a file displays a dialog box to modify the information.

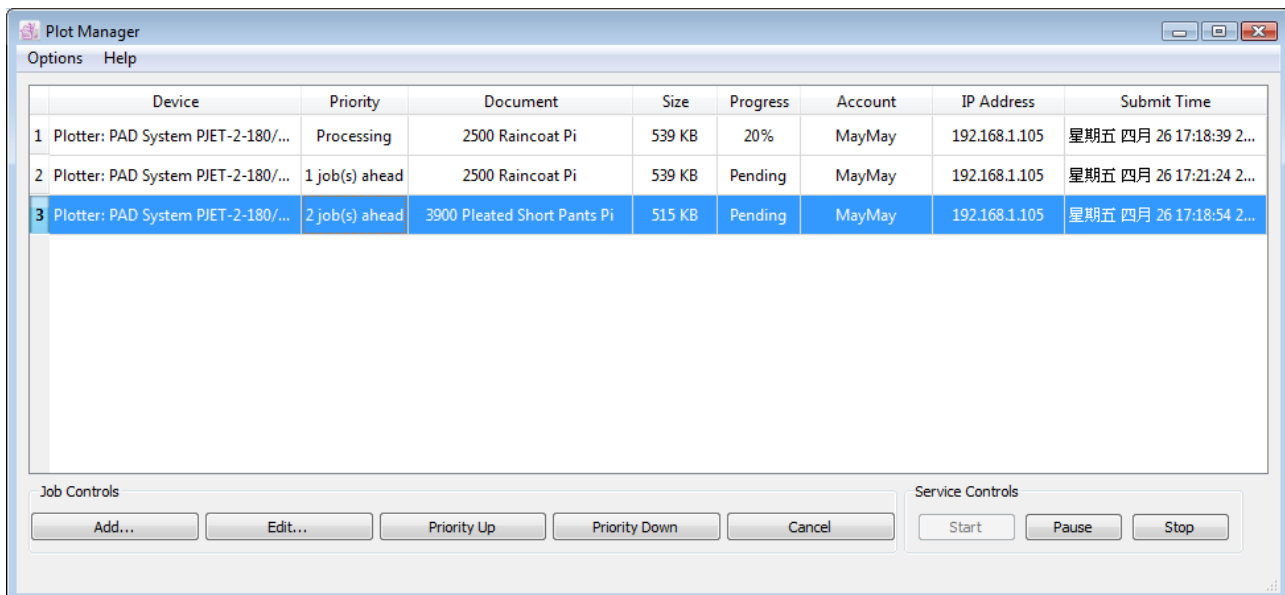
**Priority Up:** Move up the plotted file to be a high priority in the job list.



**Priority Down:** Move down the plotted file to low priority from the job list.



Select the plot job you wish to move, then press *Priority Down* button.  
The selected plot job moves to your desired location.



**Cancel:** Delete the plot job from the list.



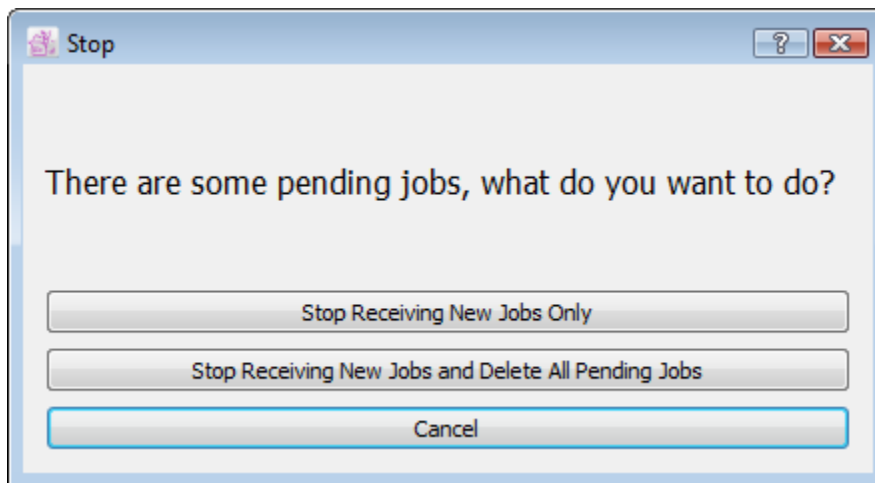
### Service Controls

**Start:** Press *Start* button to connect the client and receive the plotted files. And start to plot from the default plotter.

**Pause:** Choose the file and press *Pause* button; the chosen file will change the status to Paused.

**Continue:** Choose the file and press *Continue* button; the chosen file will change the status to 1 job(s) ahead.

**Stop:** Press *Stop* button to disable the connection for plotting. A dialog box appears, offer two options to handle the plotted files as follows:



**Stop Receiving New Jobs Only:** Stop receiving new jobs but keep all pending jobs in the list.

**Stop Receiving New Jobs and Delete All Pending Jobs:** Stop receiving new jobs and delete all pending jobs from the list.



# Appendix A

## PAD System Software License Agreement

.....

PAD System International Limited  
Software License

PLEASE READ THIS SOFTWARE LICENSE AGREEMENT ("LICENSE") CAREFULLY. BY CLICKING "Yes", YOU ARE AGREEING TO BE BOUND BY THE TERMS OF THIS LICENCE. IF YOU DO NOT AGREE TO THE TERMS OF THIS LICENCE, OR IF YOU PURCHASED OR OBTAINED THE PAD SYSTEM SOFTWARE FROM AN UNAUTHORISED REPRESENTATIVE OF PAD SYSTEM INTERNATIONAL LIMITED, CLICK "No" AND (IF APPLICABLE) RETURN THE PAD SYSTEM SOFTWARE TO THE PLACE WHERE YOU OBTAINED IT FOR A REFUND.

1. License. The software, documentation and materials accompanying this License whether on disk, in read only memory, on any other media or in any other form (the "PAD System Software") are licensed to you by PAD System International Limited. You own the media on which the PAD System Software is recorded but PAD International Limited is the owner of the PAD System Software. The PAD System Software in this package and any copies which this License authorizes you to make are subject to this License.

2. Permitted Uses and Restrictions. This License allows you to install and use the PAD System Software on a single computer(s) with the appropriate hardware protection device provided at the time of initial purchase of PAD System software upon the terms and subject to the conditions contained herein. This License does not allow the PAD System Software to be loaded, installed or used on any other computer. You may make one copy of the PAD System Software in machine readable form for backup purposes only. The backup copy must include all copyright information contained on the original. Except as expressly permitted in this License, you may not decompile, reverse engineer, disassemble, modify, rent, lease, loan, sublicense, distribute or create derivative works based upon the PAD System Software in whole or part. This license allows you to install or operate the PAD System Software only on a computer system with the appropriate hardware protection device. THE PAD SYSTEM SOFTWARE IS NOT INTENDED FOR USE IN THE OPERATION OF NUCLEAR FACILITIES, AIRCRAFT NAVIGATION, COMMUNICATION SYSTEMS, OR AIR TRAFFIC CONTROL MACHINES IN WHICH CASE THE FAILURE OF THE PAD



SYSTEM SOFTWARE COULD LEAD TO DEATH, PERSONAL INJURY, OR SEVERE PHYSICAL OR ENVIRONMENTAL DAMAGE AND PAD SYSTEM INTERNATIONAL Limited WILL NOT BE LIABLE FOR ANY DAMAGES OR LOSSES SO CAUSED. This Licence will terminate automatically without notice from PAD System International if you fail to comply with any term(s) of this License.

3. Proprietary Rights. You acknowledge that the PAD System software and related materials provided by PAD System International Limited are the exclusive property of PAD System International Limited and said materials are furnished solely to assist you in the installation, operation and use of the PAD System software. The only right which obtains from purchasing the PAD System software and related materials is the right of use in accordance with the terms and conditions of this License. Title to or ownership of all applicable rights in patent, copyright, trademark and trade secrets in PAD System software and related materials shall remain exclusively with PAD System International Limited.

4. Limited Warranty on Media (if applicable). PAD System International Limited warrants the media on which the PAD System Software is recorded to be free from defects in materials and workmanship under normal use for a period of ninety (90) days from the date of original retail purchase. Your sole remedy under this provision shall be, at PAD System International Limited's discretion, a refund of the purchase price of the product containing the PAD System Software or replacement of the PAD System Software when returned to PAD System International Limited or a PAD System International Limited's authorized representative with a copy of a valid purchase receipt. A valid purchase receipt means a receipt issued by an authorized representative of PAD System International Limited. THIS LIMITED WARRANTY AND ANY IMPLIED WARRANTIES ON THE MEDIA INCLUDING THE IMPLIED WARRANTIES OF MERCHANTABILITY AND FITNESS FOR A PARTICULAR PURPOSE ARE LIMITED TO A PERIOD OF NINETY (90) DAYS FROM THE DATE OF ORIGINAL RETAIL PURCHASE. SOME JURISDICTIONS DO NOT ALLOW LIMITATIONS ON HOW LONG AN IMPLIED WARRANTY LASTS, SO THIS LIMITATION MAY NOT APPLY TO YOU. TO THE EXTENT PERMITTED BY APPLICABLE LAW, PAD SYSTEM INTERNATIONAL LIMITED SPECIFICALLY DISCLAIMS ALL OTHER WARRANTIES ON THE MEDIA , WHETHER VERBAL OR WRITTEN, EXPRESS OR IMPLIED.

5. Disclaimer of Warranty on PAD System Software. You expressly acknowledge and agree that use of the PAD System Software is at your sole risk. The PAD System Software is provided "AS IS" and without warranty of any kind and PAD System International LIMITED EXPRESSLY DISCLAIMS ALL WARRANTIES AND/OR CONDITIONS, EXPRESSED OR IMPLIED, INCLUDING, BUT NOT LIMITED TO, THE IMPLIED WARRANTIES AND/OR CONDITIONS OF MERCHANTABILITY OR SATISFACTORY



QUALITY AND FITNESS FOR A PARTICULAR PURPOSE AND NONINFRINGEMENT OF THIRD PARTY'S RIGHTS. PAD SYSTEM INTERNATIONAL LIMITED DOES NOT WARRANT THAT THE FUNCTIONS CONTAINED IN THE PAD SYSTEM SOFTWARE WILL MEET YOUR REQUIREMENTS, OR THAT THE OPERATION OF THE PAD SYSTEM SOFTWARE WILL BE UNINTERRUPTED OR ERROR-FREE, OR THAT DEFECTS IN THE PAD SYSTEM SOFTWARE WILL BE CORRECTED. FURTHERMORE, PAD SYSTEM INTERNATIONAL LIMITED. DOES NOT WARRANT OR MAKE ANY REPRESENTATIONS REGARDING THE USE OR THE RESULTS OF THE USE OF THE PAD SYSTEM SOFTWARE OR RELATED DOCUMENTATION IN TERMS OF THEIR CORRECTNESS, ACCURACY, RELIABILITY, OR OTHERWISE. NO ORAL OR WRITTEN INFORMATION OR ADVICE GIVEN BY PAD SYSTEM INTERNATIONAL LIMITED OR A PAD SYSTEM INTERNATIONAL LIMITED'S AUTHORIZED REPRESENTATIVE SHALL CREATE A WARRANTY OR IN ANY WAY WIDEN THE SCOPE OF THIS WARRANTY. SHOULD THE PAD SYSTEM SOFTWARE PROVE DEFECTIVE, YOU (AND NOT PAD SYSTEM INTERNATIONAL LIMITED OR ITS AUTHORIZED REPRESENTATIVE) ASSUME THE ENTIRE COST OF ALL NECESSARY SERVICING, REPAIR OR CORRECTION. SOME JURISDICTIONS DO NOT ALLOW THE EXCLUSION OF IMPLIED WARRANTIES, SO THE ABOVE EXCLUSION MAY NOT APPLY TO YOU. PAD SYSTEM INTERNATIONAL LIMITED SHALL BE UNDER NO LIABILITY TO YOU WHATSOEVER IN RESPECT OR THE PAD SYSTEM SOFTWARE IF YOU PURCHASED OR OBTAINED IT FROM AN UNAUTHORISED REPRESENTATIVE OF PAD SYSTEM INTERNATIONAL LIMITED. THE TERMS OF THIS DISCLAIMER DO NOT AFFECT OR PREJUDICE THE STATUTORY RIGHTS OF A CONSUMER ACQUIRING PAD SYSTEM INTERNATILNA LIMITED'S PRODUCTS OTHERWISE THAN IN THE COURSE OF A BUSINESS, NEITHER DO THEY LIMIT OR EXCLUDE ANY LIABILITY FOR DEATH OR PERSONAL INJURY CAUSED BY PAD SYSTEM INTERNATIONAL LIMITED'S NEGLIGENCE.

6. Limitation of Liability. UNDER NO CIRCUMSTANCES, INCLUDING NEGLIGENCE, SHALL PAD SYSTEM INTERNATIONAL LIMITED. BE LIABLE FOR ANY INCIDENTAL, SPECIAL, INDIRECT OR CONSEQUENTIAL DAMAGES ARISING OUT OF OR RELATING TO THIS LICENSE. SOME JURISDICTIONS DO NOT ALLOW THE LIMITATION OF INCIDENTAL OR CONSEQUENTIAL DAMAGES SO THIS LIMITATION MAY NOT APPLY TO YOU. In the event that any exclusion contained in this provision shall be held to be invalid for any reason and PAD System International Limited becomes liable for loss or damage that may lawfully be limited, such total liability to you for all damages shall not exceed the amount of [ one thousand Hong Kong dollars (HK\$1.000.00)].

7. Term and Termination. PAD System International Limited shall have the right to terminate this Licence if you fail to comply with the terms and conditions herein contained. PAD System International Limited shall give written notice to you of such defaults and if such defaults have





not been cured within thirty (30) days after such notice, then PAD System International Limited shall be entitled, in addition to any other rights it may have under this Licence or in law, to terminate this Licence. You agree, upon expiration of the term of the present Licence or upon termination by reason of your default, to immediately return or destroy the PAD System software and copies thereof and related materials as directed by PAD System International Limited and, if requested by PAD System International Limited, to certify in writing as to the destruction or return of the PAD System Software and all copies thereof.

8. Compliance. You agree that PAD System International Limited may perform such tests as PAD System International Limited shall deem necessary to monitor compliance with this Licence at any time, with or without notice, during normal business hours.

9. Controlling Law and Severability. This License shall be governed by the laws of Hong Kong SAR. If for any reason a court of competent jurisdiction finds any provision, or portion thereof, to be unenforceable, the remainder of this License shall continue in full force and effect.

10. Complete Agreement. This License constitutes the entire agreement between the parties with respect to the use of the PAD System Software and supersedes all prior or contemporaneous understandings regarding such subject matter. No amendment to or modification of this License will be binding unless in writing and signed by PAD System International Limited.

PAD SYSTEM INTERNATIONAL LIMITED



## Appendix B

# About PAD System International Limited

.....

PAD System was founded in 1988, in Montreal Canada by creative people from the apparel industry.

A leader in CAD/CAM integrated solutions and dedicated to the apparel, textile and leather industry, PAD System is present on all five continents through its international distribution network.

Today PAD System is active in more than 50 countries and available in 8 languages.

From virtual design to integrated production, PAD System and its partners provide service, support and training to thousands of satisfied customers worldwide—from freelancers to large scale producers.

With a complete design suite—pattern, placement, production—the software offered by PAD System represents a set of cutting-edge modules that are complete, coherent, and compatible with the competition. PAD System software may also be used with the majority of standard peripherals on the market, such as digitizing tables, plotters, automated knives and even scanners.

PAD System's mission is to produce complete, high-tech CAD/CAM solutions that are simple, efficient and flexible for companies and individuals working in the clothing, textile, and leather industries, as well as the 3D graphic design industry.



**PAD System™ International Limited (Head Office)**

Flat A, 2/F, Cheung Wing Industrial Building,  
109-115 Wo Yi Hop Road, Kwai Chung,  
New Territories, Hong Kong

Telephone: (852) 2370-9063

Fax: (852) 2370-9085

padinfo@padsystem.com

<http://www.padsystem.com/>

Other countries:

Please locate the distributor near to you by consulting our website:

[www.padsystem.com](http://www.padsystem.com) , distributors section.