



Release Note
Of
PAD² V6 Digitizer Manager
And
PAD² V6 Plot Manager

By PAD Product Development and Support Team



PAD System™ is a trademark and a system developed by:

PAD System™ International Limited. Flat A, 2/F, Cheung Wing Industrial Building,
109-115 Wo Yi Hop Road, Kwai Chung, New Territories, Hong Kong

Telephone: (852) 2370-9178

Fax: (852) 2370-9085

E-mail: padinfo@padsystem.com

Technical support: support@padsystem.com

Website: www.padsystem.com

No part of this publication and PAD System™ software may be reproduced, transmitted, transcribed, stored in a retrieval system, or translated into any language in any part form by any means without the written permission of PAD System™ International Limited. Any unauthorized duplication or use of PAD System™, in whole or in part, in print, or in any other storage and retrieval system is forbidden.



Table of Contents

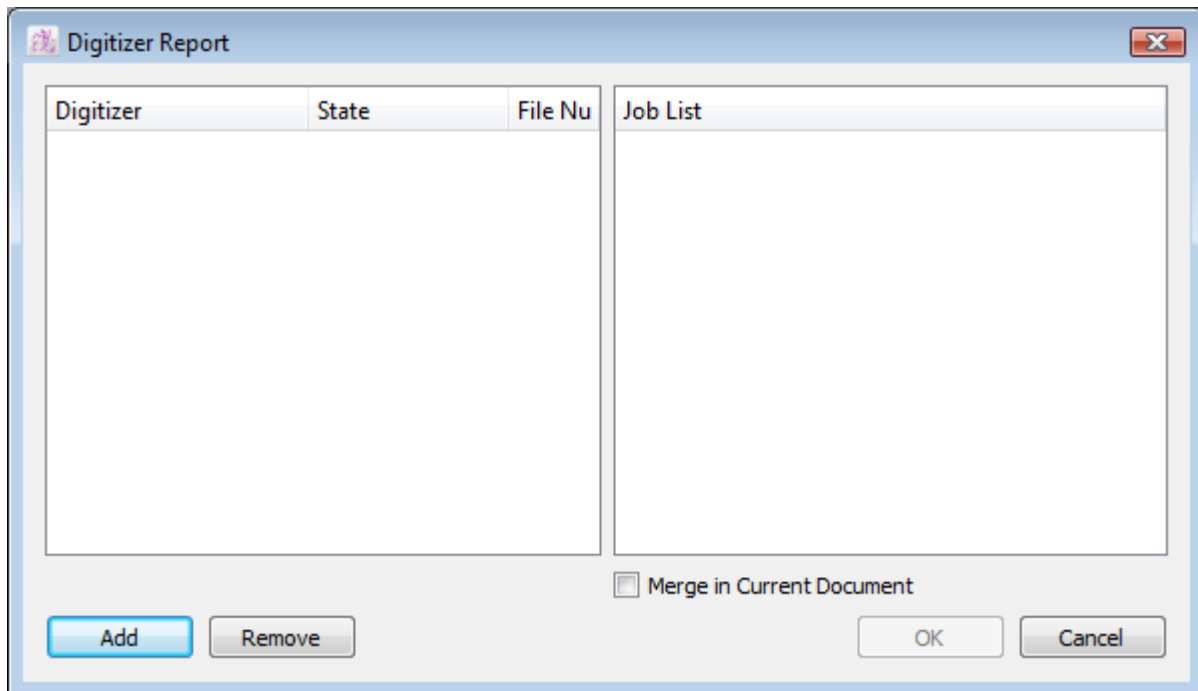
Digitizer Manager	4
Plot Manager	8

Digitizer Manager

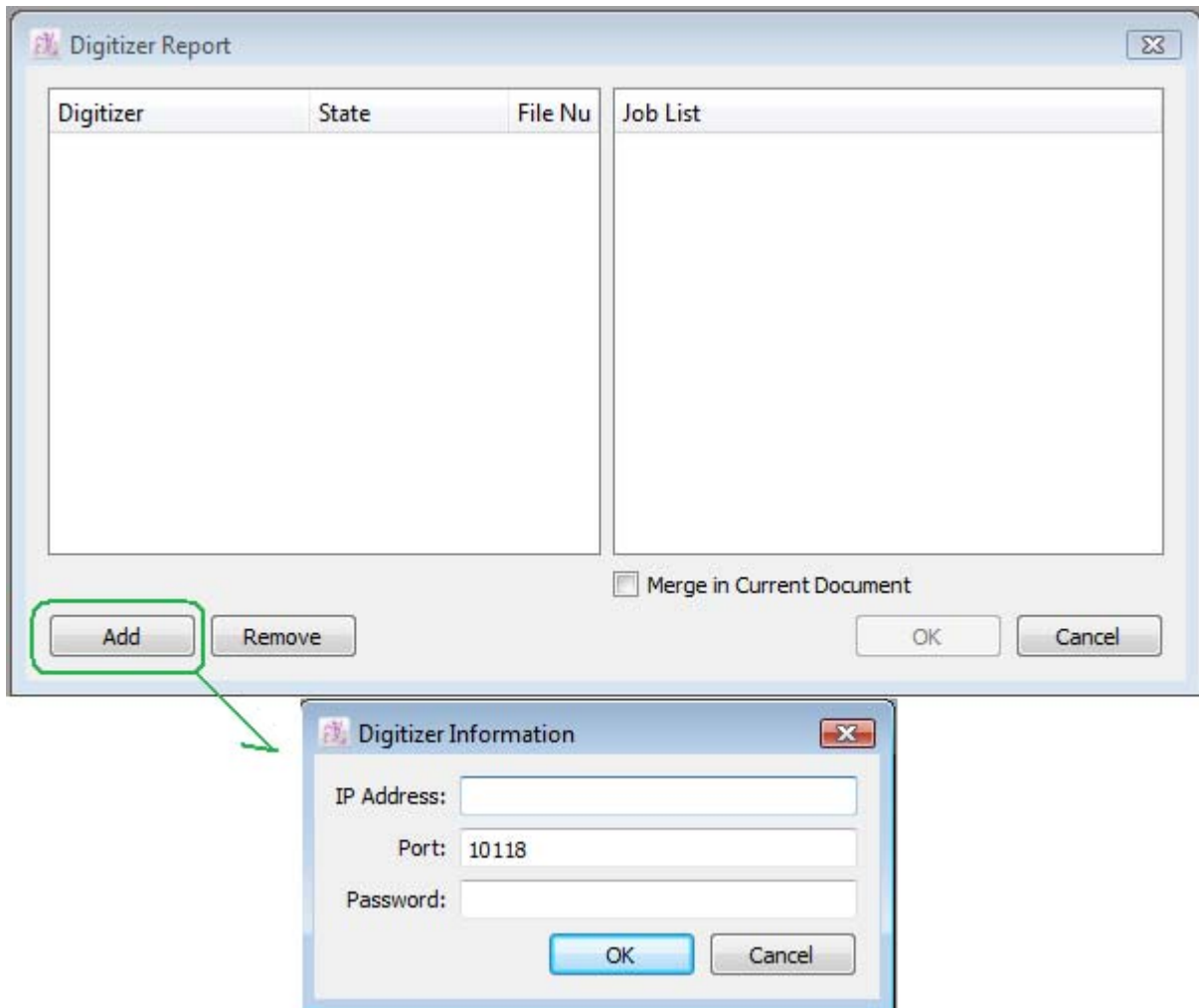
There are 2 features added to Digitizer Manager as follows.

Send Files through WAN IP

1. The digitized files in Digitizer Manager, it can be sent to Pattern Design through WAN IP. Please go to the item "Open Digitizer..." in Pattern Design.



2. Press Add button to input the IP address and password.



3. All of digitized files displayed on the job list.



Set Password to Identify User Account

1. The item in Connection Setting allows setting the password of the client. The client is from Pattern and gives a password to identify the user account.

Connection Settings

IP Address: 180.166.25.42
[Click Here to Verify Wan IP Address](#)

Port: 10118

Device Name: PAD Digitizer Table

Password:

OK Cancel

Password: Give a password to identify the user account.

2. The item "Open Digitizer" in Pattern Design, a dialog box appears:

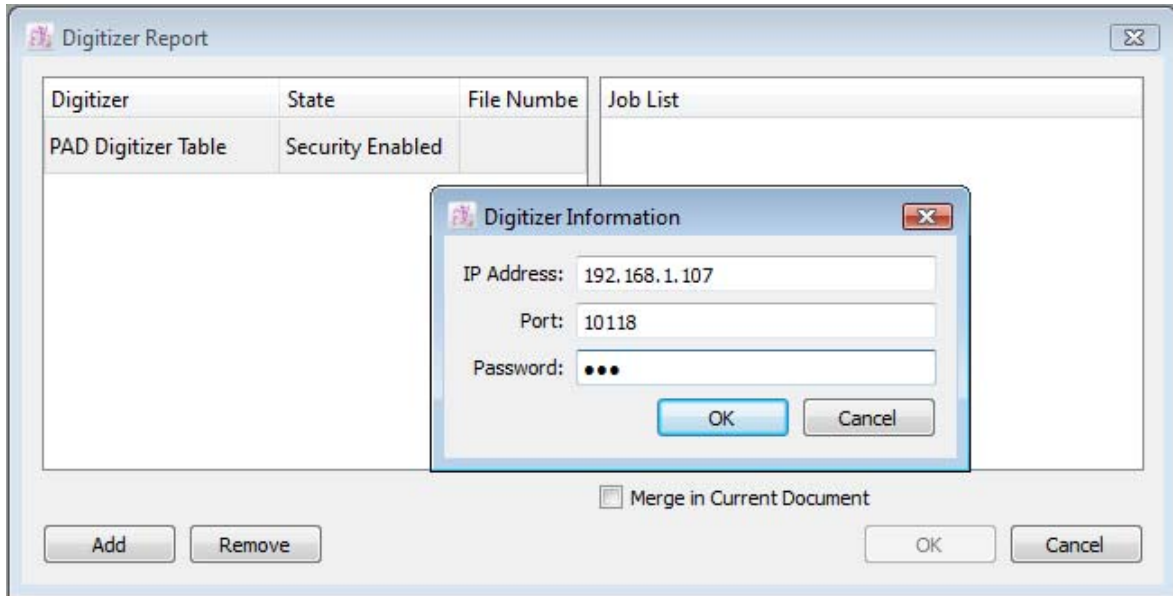
Digitizer Report

Digitizer	State	File Numbe	Job List
PAD Digitizer Table	Security Enabled		

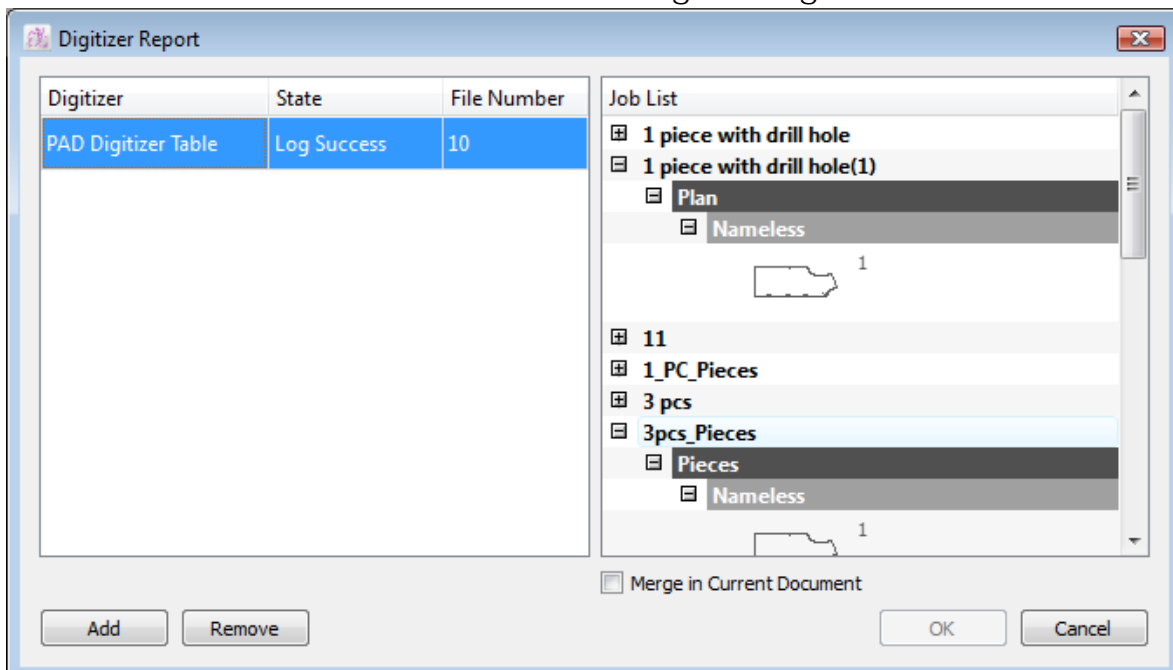
Merge in Current Document

Add Remove OK Cancel

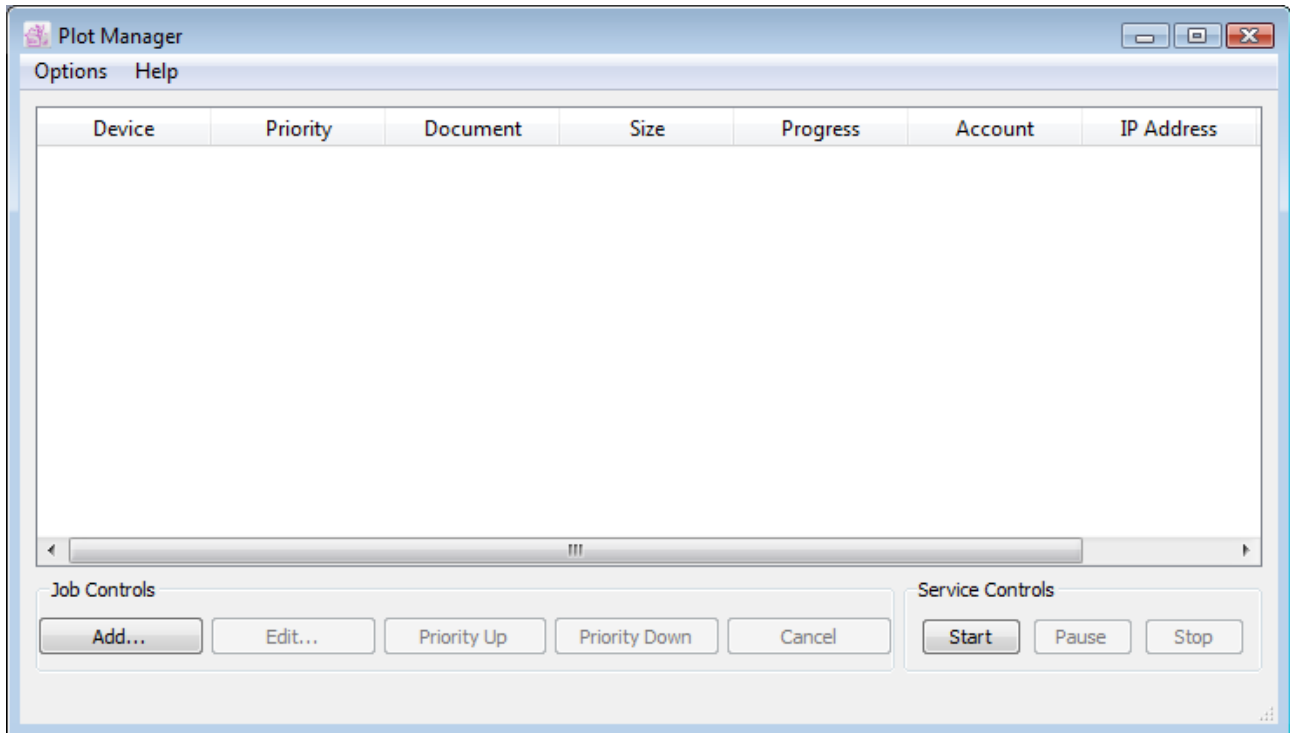
- The status of the account set with security password.
Please double click on the selected account and input the password.



- Press OK button to validate. All of files displayed as follows.
The state of the selected account change to Log Success.



Plot Manager



Add...

The *Add...* item opens any PAD System pattern and/or marker file of the same version or lower version. The chosen file is read and the proper dialog box appears, allowing you to establish the information to be plotted.

Pause...

Choose the file and press *Pause* button; the chosen file will change the status to Paused.